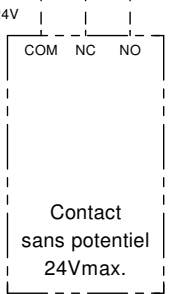
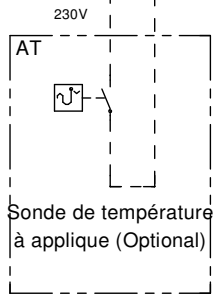
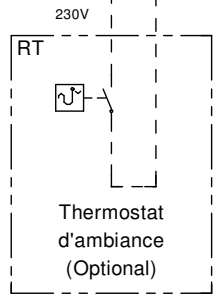
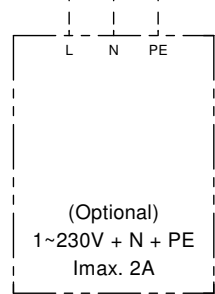
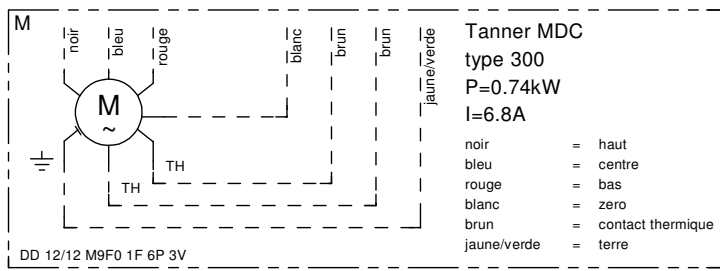
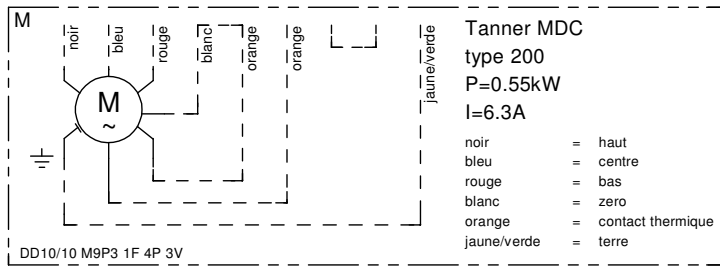
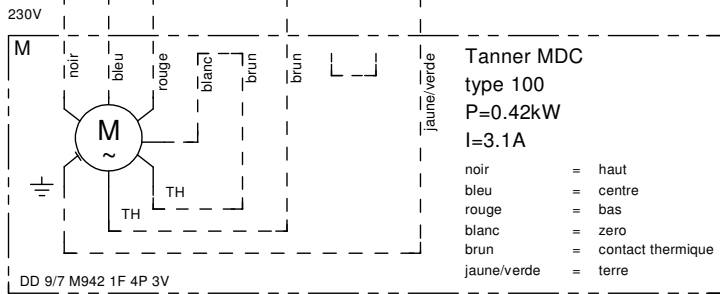
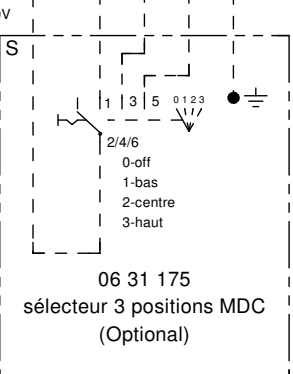
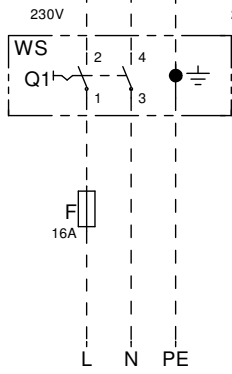
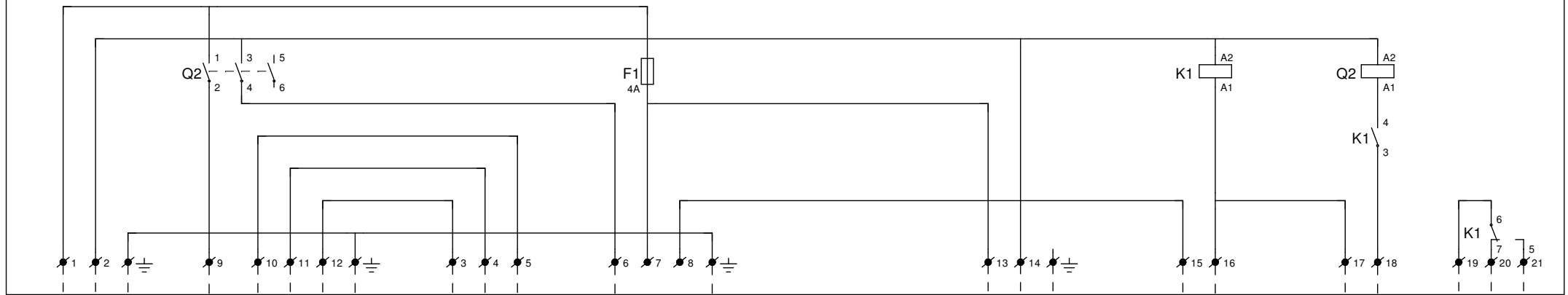


# 30 03 500, Panneau de commande moteur Tanner MDC 100/200/300, 230V



bas  
centre  
haut

Si le sélecteur de choix n'est pas appliqué, il y a lieu de faire 1 des 3 pontages

Places? Cavalier s'il n'y a pas un thermostat d'ambiance est utilisé

Places? Cavalier s'il n'y a pas un sonde de température à applique est utilisé

WS - 06 31 162 L'interrupteur de proximité