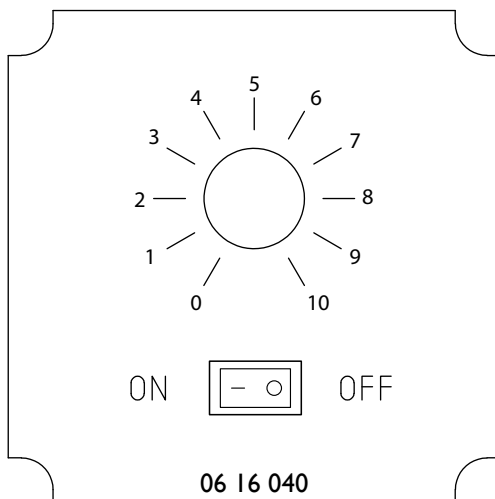


Speed controller

06 64043



Read this document before installing the appliance

Warning

Incorrect installation, adjustment, alteration, repair or maintenance work may lead to material damage or injury. All work must be carried out by certified, qualified professionals. If the appliance is not positioned in accordance with the instructions, the warranty shall be rendered void. This appliance is not intended for use by children or persons with a physical, sensory or mental handicap, or who lack the required experience or expertise, unless they are supervised or have been instructed in the use of the appliance by somebody who is responsible for their safety. Children must be supervised to ensure that they do not play with the appliance.

1.0 General

1.1 All rights reserved

The manufacturer has a policy of continuous product improvement and reserves the right to make changes to the specifications without prior notice. The technical details are considered correct but do not form the basis for a contract or warranty. All orders are accepted subject to the standard terms and conditions of sale and delivery (which will be sent to you at your request). The information in this document is subject to change without notice. The most recent version of this manual is always available at www.markclimate.com/downloads.

1.2 Description

Varia bie speed fan controller suitable for use with single phase units.

Article No.	Code	Supply	Max. Peak Current	H x W x D	Mounting
004488	HFC1.7	230V/I Ph/50Hz	1.7 Amps	108 X 108 X 60	Surface mounting
005879	HFC2.0	230V/I Ph/50Hz	2.0 Amps	88 X 88 X 55	Surface or Flush mounted
004489	HFC3.0	230V/I Ph/50Hz	3.0 Amps	108 X 108 X 60	Surface mounting
004490	HFC6.0	230V/I Ph/50Hz	6.0 Amps	108 X 108 X 60	Surface mounting

1.3 General warnings

1. It is important that these Installation and Maintenance Instructions are fully adhered to.
2. Upon receipt, the equipment should be visually inspected to check for any damage.
3. Full details of the unit supplies are shown on the product nameplate. If in doubt about any detail contact Mark Climate Technology for clarification.
4. All electrical installation must be carried out by a suitably qualified and competent personnel in accordance with all current statutory requirements and regulation.
5. These instructions cover only the Mark Climate Technology product and do not include the supply or installation of any safety equipment that may be required, e.g. adequate guarding or protection from rotating parts and proper electrical isolation.
6. Any declarations made by Mark Climate Technology about product installation and safety, are dependent on the electrical equipment used within installations which themselves meet the requirements of the relevant Standards and Directives of your region.
7. The controller is not suitable for corrosive or explosive atmospheres.
8. The installer should provide easy access to the controller to facilitate future maintenance.
9. The installer should ensure the controller is adequately supported.
10. This product is not intended for use by young children or infirm persons unless they have been adequately supervised by a responsible person to ensure that they can use the product safely.
11. Young children should be supervised to ensure they do not play with the appliance.

2.0 Installation

1. Check the details on the motor rating plate to ensure that the correct power supply (voltage, frequency and phase) is available. An incorrect power supply will lead to permanent damage of the unit.
2. Check that the number, size and speed of the fan(s) can be controlled by the controller supplied.
3. Connections are provided for one (1) fan outlet. If more than one fan is to be controlled.
4. Install in a dry sheltered position.
5. DO NOT install in a close proximity to a heat source or in areas of high humidity.
6. The maximum ambient temperature for the controller must not exceed 40°C (104F).

WARNING: The controller must be isolated from the power supply during installation and maintenance.

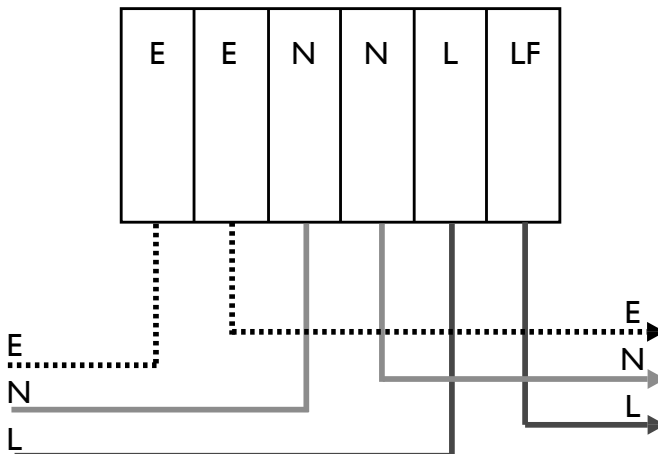
7. Remove the front cover of the controller by unscrewing the two cover fixing screws. This provides access to the mounting holes and electrical terminals.
8. The controller must be connected to a suitably rated fused spur.
9. Adjustment of the pre-set potentiometer RVI, may be required to ensure that the fan starts and rotates on minimum speed setting.
10. Isolate the mains supply before commencing wiring the controller.

3.0 Wiring

3.1 General

1. Select the correct wiring. All wiring and control equipment MUST comply with the latest IEE regulations, in particular 552-01-02/03.
2. In the event that the wiring connections for the fan supplied do not correspond to the diagrams shown please refer to the fan instructions or contact Mark Climate Technology for further assistance.

3.2 Connections



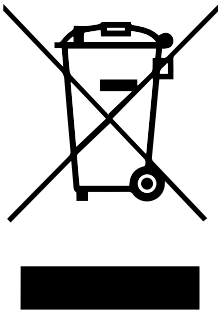
4.0 Operation

1. Replace the controller cover.
2. Switch on the controller by operating the ON/OFF rocker switch. Adjust the speed by rotating the speed control knob anti-clockwise for LOW speed, and clockwise for HIGH speed.
3. The fan is switched on/off by the rocker switch.

5.0 Maintenance

Minimal maintenance of the controller is required, but it should be kept clean and free from dust. Ensure that all connections are as tight as possible as part of a routine maintenance programme.

6.0 Disposal and Recycling



Information on disposal of units at the end of life. This product complies with EU Directive 2002/96/EC. The symbol of the crossed-out dustbin indicates that this product must be collected separately from other waste at the end of its life. The user must, therefore, dispose of the product in question at suitable electronic and electro-technical waste disposal collection centres, or else send the product back to the retailer when purchasing a new, equivalent type device. Separate collection of decommissioned equipment for recycling, treatment and environmentally compatible disposal helps to prevent negative effects on the environment and on health and promotes the recycling of the materials that make up the equipment. Improper disposal of the product by the user may result in administrative sanctions as provided by law.

Guarantee

Mark Climate Technology will, within a period of one year from the date of dispatch from their works, at its option, replace any goods, which are proven to have defects as a result of defective materials or workmanship. The goods must be inspected by a Mark Climate Technology official and if necessary returned, with a Returns Note Number, carriage paid, for further examination.

MARK BV

BENEDEN VERLAAT 87-89
 VEENDAM (NEDERLAND)
 POSTBUS 13, 9640 AA VEENDAM
 TELEFOON +31 (0)598 656600
 FAX +31 (0)598 624584
 info@mark.nl
 www.mark.nl

MARK EIRE BV

COOLEA, MACROOM
 CO. CORK
 P12 W660 (IRELAND)
 PHONE +353 (0)26 45334
 FAX +353 (0)26 45383
 sales@markeire.com
 www.markeire.com

MARK BELGIUM b.v.b.a.

ENERGIELAAN 12
 2950 KAPellen
 (BELGIË/BELGIQUE)
 TELEFOON +32 (0)3 6669254
 info@markbelgium.be
 www.markbelgium.be

MARK DEUTSCHLAND GmbH

MAX-PLANCK-STRASSE 16
 46446 EMMERICH AM RHEIN
 (DEUTSCHLAND)
 TELEFON +49 (0)2822 97728-0
 TELEFAX +49 (0)2822 97728-10
 info@mark.de
 www.mark.de

MARK POLSKA Sp. z o.o

UL. JASNOGÓRSKA 27
 42-202 CZĘSTOCHOWA (POLSKA)
 PHONE +48 34 3683443
 FAX +48 34 3683553
 info@markpolska.pl
 www.markpolska.pl

S.C. MARK ROMANIA S.R.L.

STR. KOS KAROLY NR. 1 A
 540297 TARGU MURES
 (ROMANIA)
 TEL/FAX +40 (0)265-266.332
 office@markromania.ro
 www.markromania.ro

